



Legal Professional Privilege

Lessons learned in Integrated Legal Services

ruahlegal.org.au

RUAH
LEGAL SERVICES

*mental
health*
LAW CENTRE

Acknowledgement of Country

Ruah proudly acknowledges Australia's Aboriginal and Torres Strait Islander community and their rich culture and pays respect to their Elders past and present.

We recognise Aboriginal and Torres Strait Islander peoples as the Traditional Owners and Custodians of the land and water on which we rely and embrace the spirit of reconciliation, working towards the equality of outcomes and ensuring an equal voice.



Walking
with you.

Ruah Legal Services Journey

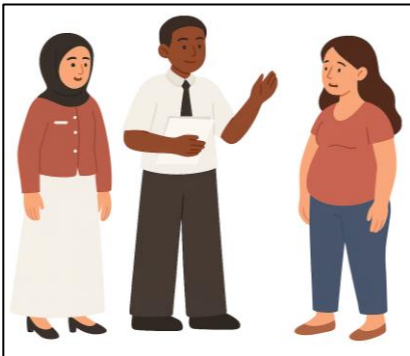


- Co-location with Ruah Community Services – April 2018
- Multidisciplinary service (Criminal Law) – January 2019
- Merger – November 2019
- Multidisciplinary service (FDV legal) – July 2020
- Interdisciplinary service (Child Protection) – September 2020
- Interdisciplinary service (Criminal Law) – December 2020

Models of Integrated Legal Services

Interdisciplinary

- No information barrier
- Lawyer and community worker work together closely
- Service provision through joint planning with client



Multidisciplinary

- Information barrier
- Lawyer and community worker work relatively independently
- Services connected through co-location / scheduled meetings



Lessons Learned

- What works in a small team, may not serve a larger team.
- Reassess ways of working as the team grows.
 - Team dynamics
 - Limits of charismatic leadership
 - Impact of turnover

Lessons Learned

- Integrated legal services come in many forms.
- Ensure clarity in your service model(s).
 - Explore the impact of different service models
 - Consider information barriers
 - Recruitment and onboarding

Lessons Learned

- The risks are real.
- Staff and clients need to know you have a robust plan to mitigate risk.
 - Concern regarding practicing certificates.
 - Independent legal opinion (written).
 - Informed client consent.

Lessons Learned

- Assumed knowledge creates conflict.
- Difficulties arise both when we overestimate and underestimate comprehension.
 - Impact of years of legal education and training
 - Complexity of legal professional privilege
 - Differences in professional obligations

Lessons Learned

- Effective communication is key.
- Create structures to build staff capacity.
 - Legal expertise does not ensure communication skills.
 - Invest time upfront.
 - Acknowledge power differentials.

Conclusion



Thank you for listening.

We will be available after the session for
further discussion.